

## Task D2: Satellite Images of the Badia

Figure D3 shows a satellite image of a part of the northern Badia. Try to locate it in an atlas or try "Google Earth". Its reference is:

**latitude 32° 20' North, Longitude 36° 30' East**

Figure D4 shows a satellite image of the area around the town of Azraq. Try to locate it in an atlas or try "Google Earth". Its reference is:

**latitude 31° 50' North, Longitude 36° 50' East**

1: Make a list of evidence of human activity of each image.

Image D3	Image D4

2: Which image has the most evidence. Can you give reasons why? (Your work carried out in Task D1 may help)

--

3: Make a list of evidence of physical features of each image:

Image D3	Image D4

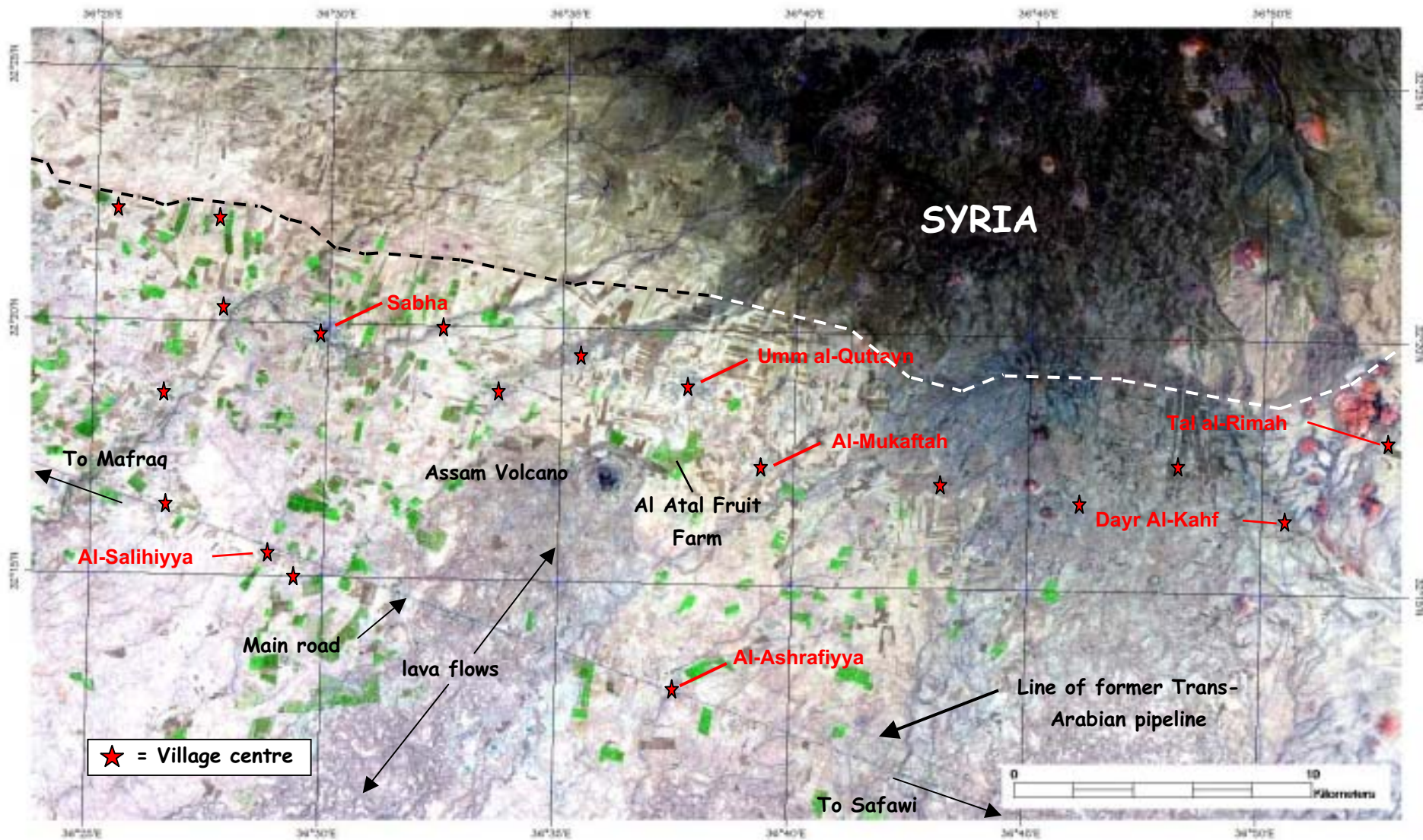


Figure D3: Satellite image of the area around Umm al-Quttayn

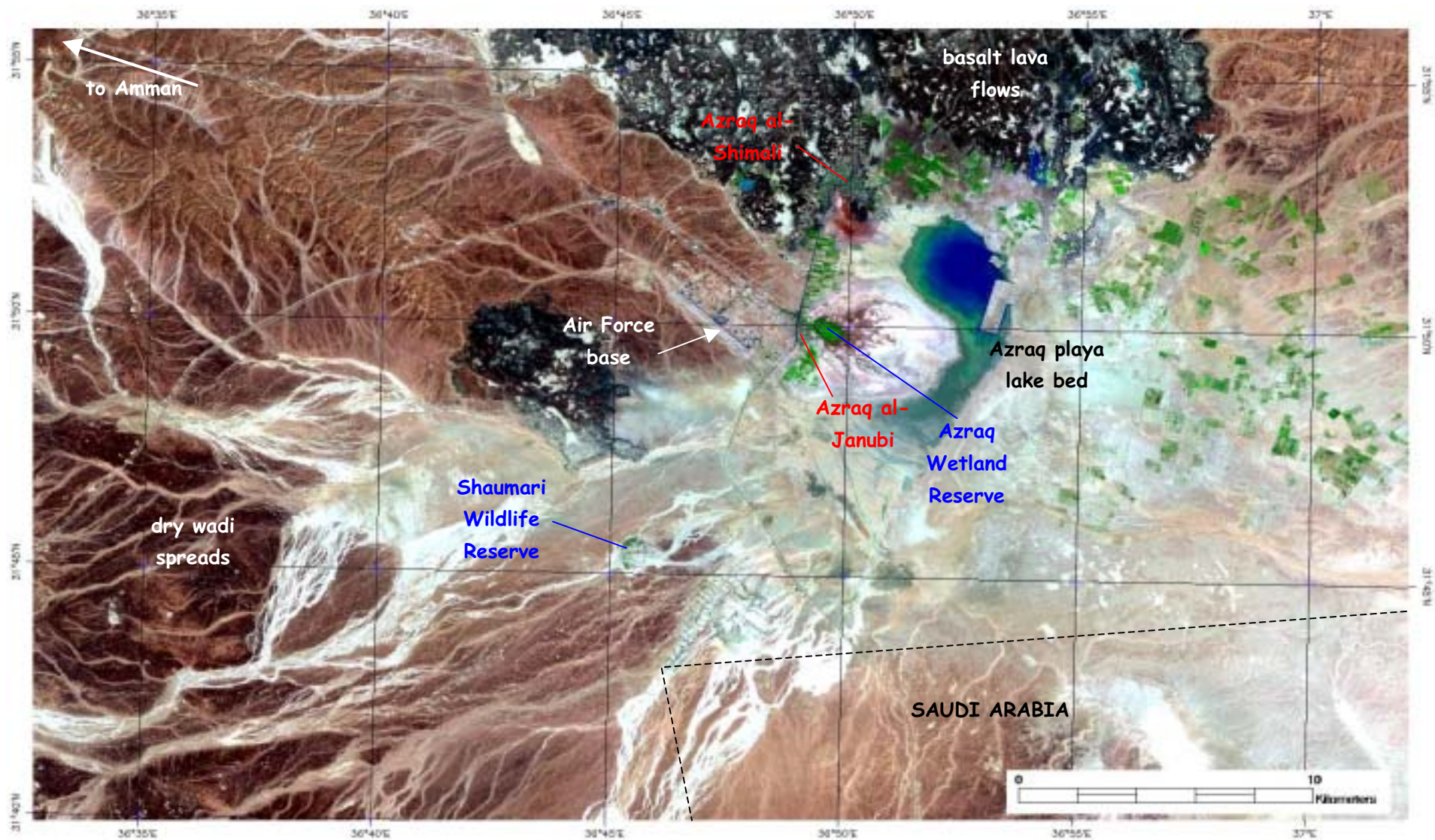


Figure D4: Satellite image of the area around Azraq